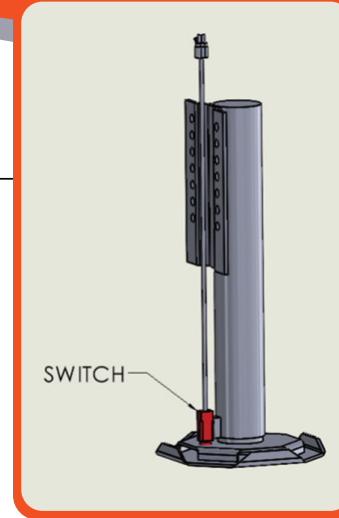


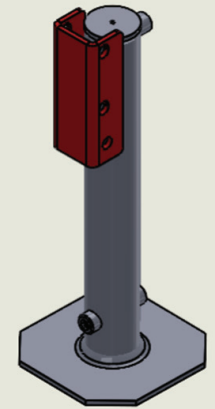
# JACK REPLACEMENT CYLINDER & FOOT IDENTIFICATION CHART

**IS THERE A SWITCH  
ON THE LEG?**

**YES - CLICK HERE**



C-Channel Bracket



**C-CHANNEL**

**CLICK to page 3**

**NO**

**PLATE - CHOOSE BODY DIAMETER**

**2 3/8"**

**CLICK to page 4**

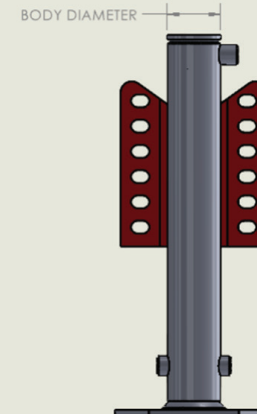
**2 7/8"**

**CLICK to page 5**

**3 3/8"**

**CLICK to page 6**

Plate Mount Bracket

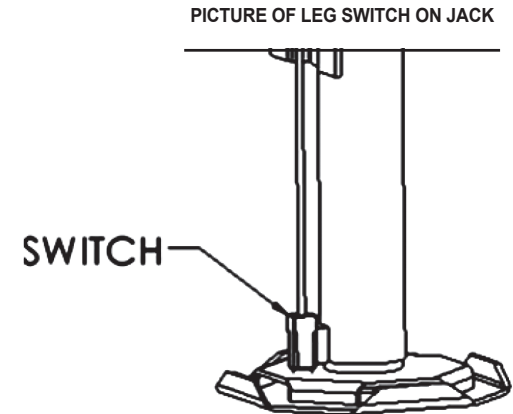
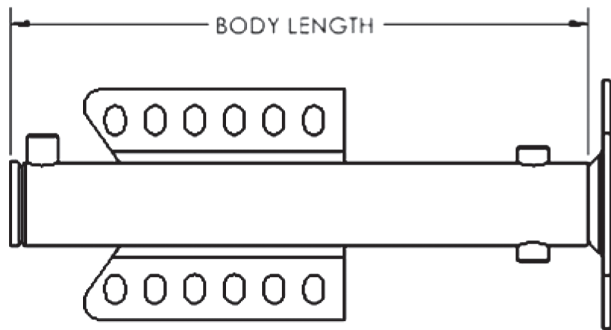


# CYLINDER & FOOT IDENTIFICATION CHART

## LEGS WITH SWITCHES

EQ SYSTEMS PART #	DESCRIPTION	BODY LENGTH	FOOT WIDTH (DIAMETER)	REPLACEMENT FOOT PART #	REPLACEMENT CYLINDER	REPLACEMENT NUT/BOLT	COMMENTS
7064	SL 12 JACK	16"	8"	7819	1365	1383	OBSOLETE- REPLACEMENT PART 7819 IS NOW A 10X10" FOOT PER EQ SYSTEMS
7066	SL 14 JACK	18 1/8"	10"	7819	1113	1383	OBSOLETE- REPLACE WITH JACK 7114
7114	SL16 JACK	21 1/8"	10"	7819	1592EQ	1383	BODY LENGTH WAS 20 1/8" BEFORE 2023
7234	SL 18 JACK	22 1/8"	11.5"	7820	1601EQ	1383	
7040	HERITAGE JACK ASSEMBLY	22 1/2"	12"			1383	OBSOLETE- CONTACT EQ SYSTEMS FOR SUGGESTIONS

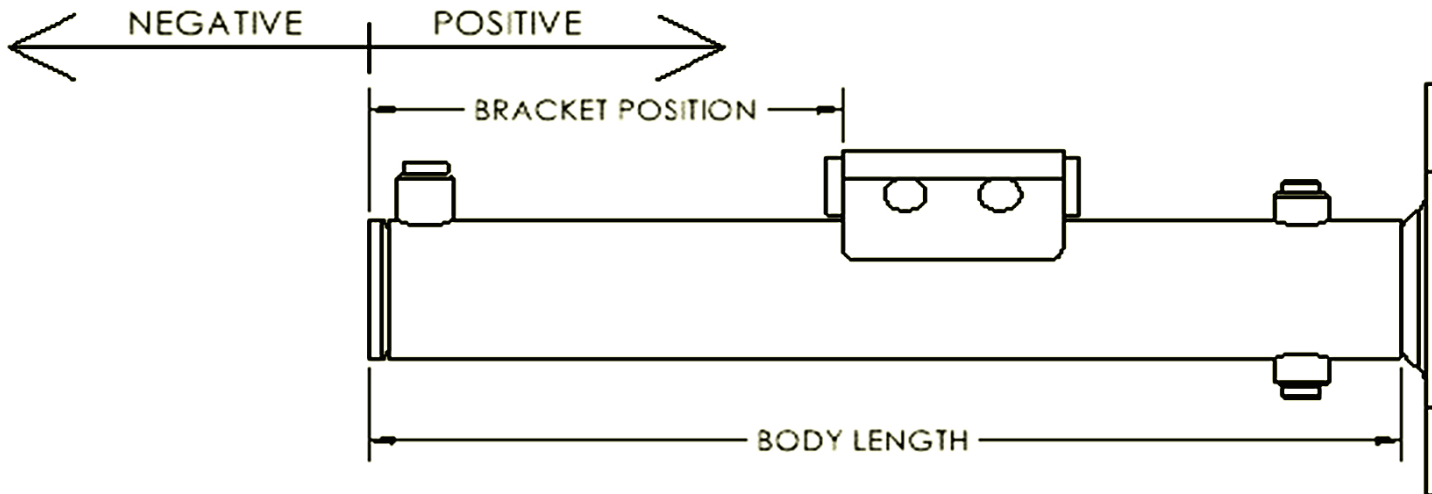
YOUR FOOTPAD COULD BE AN OCTAGON OR ROUND. THE FOOT SIZE WILL EITHER BE THE WIDTH ACROSS THE FLATS OR THE DIAMETER OF THE FOOT.



# CYLINDER & FOOT IDENTIFICATION CHART

## C-CHANNEL BRACKET

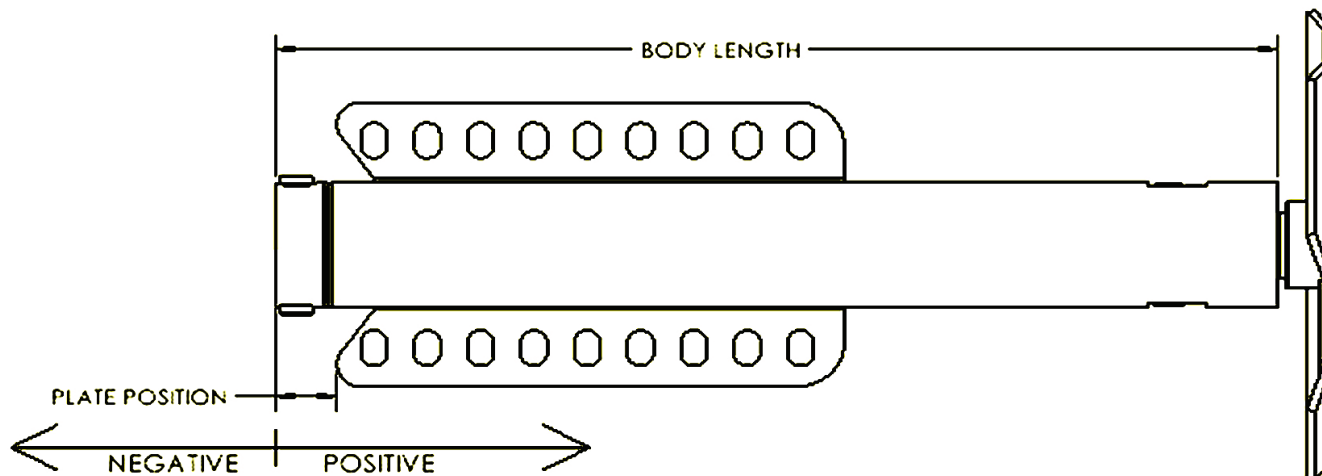
EQ SYSTEMS PART #	DESCRIPTION	BODY LENGTH	BRACKET POSITION	REPLACEMENT FOOT PART #	REPLACEMENT CYLINDER	REPLACEMENT NUT/BOLT	COMMENTS
70348	SL 11 JACK	14 3/8"	7 1/4"	70385	4059EQ	3203	
70437	SL 12 JACK	15 3/8"	7 1/4"	70385	4368EQ	3203	
70381	SL 13 JACK	16 3/8"	7 1/4"	70385	4109EQ	3203	
70309EQ/70310EQ	SL 13 JACK	16 3/8"	-1/2"	70385	3963EQ	3203	IDENTICAL CYLINDERS WITH A MOUNTING BRACKET ON OPPOSITE SIDES
70269/70270	SL 13 JACK	16 3/8"	-1 1/4"	70385	3907EQ	3203	IDENTICAL CYLINDERS WITH A MOUNTING BRACKET ON OPPOSITE SIDES



# CYLINDER & FOOT IDENTIFICATION CHART

## 2<sup>3</sup>/<sub>8</sub>" BODY PLATE MOUNT

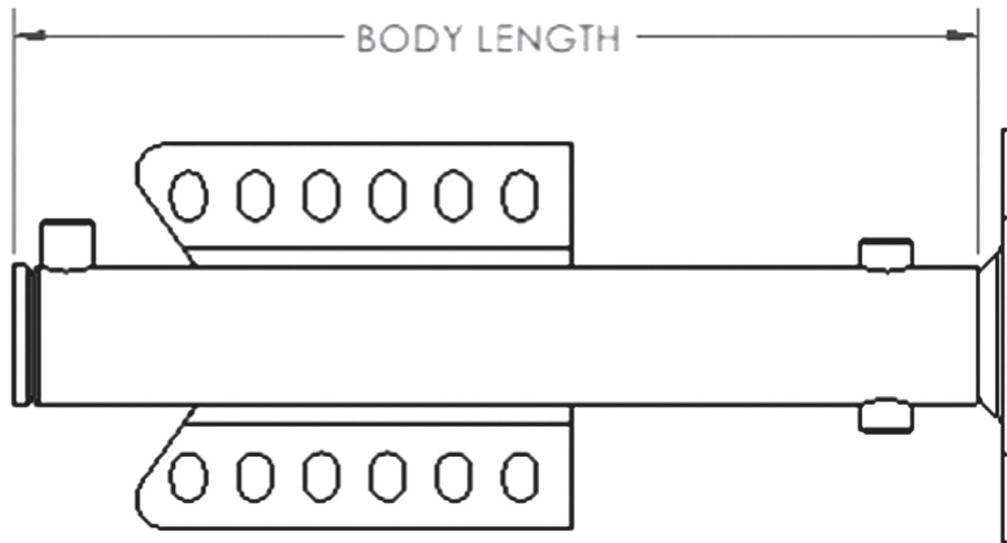
EQ SYSTEMS PART #	DESCRIPTION	BODY LENGTH	PLATE POSITION	REPLACEMENT FOOT PART #	REPLACEMENT CYLINDER	REPLACEMENT NUT/BOLT	COMMENTS
7841	SL 11 JACK	15 3/8"	0"	70385	3141	3203	
7842	SL 13 JACK	17 3/8"	0"	70385		1383	OBSOLETE- CONTACT EQ SYSTEMS FOR SUGGESTIONS
7842	SL 13 JACK	16 3/8"	-7/8"	70385	3142	3203	
7842A	SL 13 JACK	16 3/8"	2"	70385	3142A	3203	
7842REV	SL 13 JACK	16 3/8"	2"	70445	3142A	3203	THIS IS THE SAME AS THE 7842A WITH A 10X10" FOOT
7636	SL 15 JACK	19 3/8"	0"	7818	2943	1383	
7636A	SL 15 JACK	19 1/4"	-5/8"	70445	2943A	3203	



# CYLINDER & FOOT IDENTIFICATION CHART

## 2<sup>7/8</sup>" BODY PLATE MOUNT

EQ SYSTEMS PART #	DESCRIPTION	BODY LENGTH	REPLACEMENT FOOT PART #	REPLACEMENT CYLINDER	REPLACEMENT NUT/BOLT	COMMENTS
7614	SL 14	18 1/8"	7849	1113	1383	OBSOLETE- CONTACT EQ SYSTEMS FOR SUGGESTIONS
7214	SL 16	21 1/8"	7849	1592EQ	1383	BODY LENGTH WAS 20 1/8" BEFORE 2023
70073	SL 24	28 3/8"	7849	3377	1383	OBSOLETE- REPLACE WITH 70217



# CYLINDER & FOOT IDENTIFICATION CHART

## 3<sup>3/8</sup>" BODY PLATE MOUNT

EQ SYSTEMS PART #	DESCRIPTION	BODY LENGTH	PLATE POSITION	ROD DIAMETER	REPLACEMENT FOOT PART #	REPLACEMENT CYLINDER	REPLACEMENT NUT/BOLT	COMMENTS
7134	SL 18 JACK	22 3/4"	1"	2"	7821	1601EQ	1383	
70217	SL 24 JACK	29 1/2"	14 1/2"	1 1/2"	70299	3144A	1383	BODY LENGTH WAS 29" BEFORE JUNE 2023
7923	SL 24 JACK	29 1/2"	8 1/2"	2"	7821	3184EQ	1383	BODY LENGTH WAS 29" BEFORE JUNE 2023
7848	SL 24 JACK	29 1/2"	14 1/2"	2"	7821	3144EQ	1383	BODY LENGTH WAS 29" BEFORE JUNE 2023

